

## **School Uniform for September 2014**

We would like to clarify the situation on uniform to ensure the highest standards from all our pupils. The purposes behind our Huntcliff uniform policy are:

- to promote a positive school image;
- to encourage self-esteem in pupils by reducing competitive dressing;
- to prepare pupils for the expectations of employers with regard to standards of dress.

School uniforms can be purchased online (<http://www.uniform-direct.com/>) or from the following:

**Shah's Schoolwear Specialists**  
109-111 West Street  
Scunthorpe  
North Lincolnshire, DN15 6HX  
Tel: 01724 844934

**Uniform Direct**  
9 Market Street  
Gainsborough  
Lincolnshire, DN21 3BL  
Tel: 01427 616105



### **Blazer**

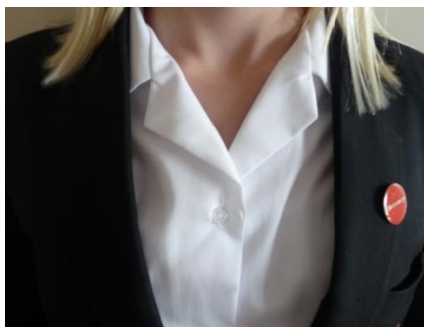
All pupils wear the school blazer (with Huntcliff logo) as a compulsory item and this must be worn at all times as the outer garment on the school site. If a pupil wishes to remove it, they must seek permission from their class teacher at the time. It is expected they then put it back on at the end of the lesson.

### **Huntcliff jumper with school crest**

This is an optional extra item of clothing and no other jumper is acceptable.

Girl with reverse collar blouse

School shirt with tie



**For Girls:** if a girl chooses to wear the reverse collar then no tie is necessary. **However as a change to the uniform, if a girl chooses to wear a normal school shirt, then a tie must be worn at all times from September 2014.**

Revere collar no tie



Revere collar with jumper



School shirt without tie



### **School Skirt for Girls**

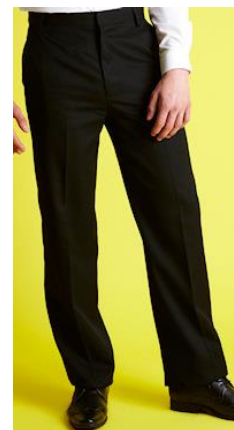
Black knee length skirts are permitted but MUST be accompanied by black tights or socks. No cord or denim skirts and the hem must be no higher than 4cm above the knee.



### **Black Trousers**

Black school trousers should be in a traditional 'loose fitting' or classic straight leg, tailored cut in a medium to heavy weight fabric, not tight fitting. Denim/Denim Style, stretchy tight materials or 'skinny' type trousers or leggings/jeggings are not acceptable. No chinos, pin-stripes, hipsters or combat style trousers or slim legged styles are permitted.

Trouser legs should have the capability of covering a school shoe.





**Plain black Shoes or completely black Trainers**

Ankle boots are acceptable so long as they are completely black and completely covered by trousers. Students are not permitted to tuck their trousers into their ankle boots. UGG style boots or knee boots are not acceptable for school. High heeled shoes are not appropriate for school and can represent a safety risk.



**The only kind of trainer type shoes considered MUST be ALL BLACK**

Completely black



Sole or tongue not black



DARK coloured outdoor coat - NOT a hoodie or zipped tracksuit tops to be brought on to the school site. No sweatshirt materials

Winter coat example



Winter coat example



Winter coat example



### **Jewellery**

Body and facial piercings are not permitted and no earrings to be worn.

All other aspects of uniform can be found in the pupil planner and on the school web site.

Please help us to make uniform outstanding

